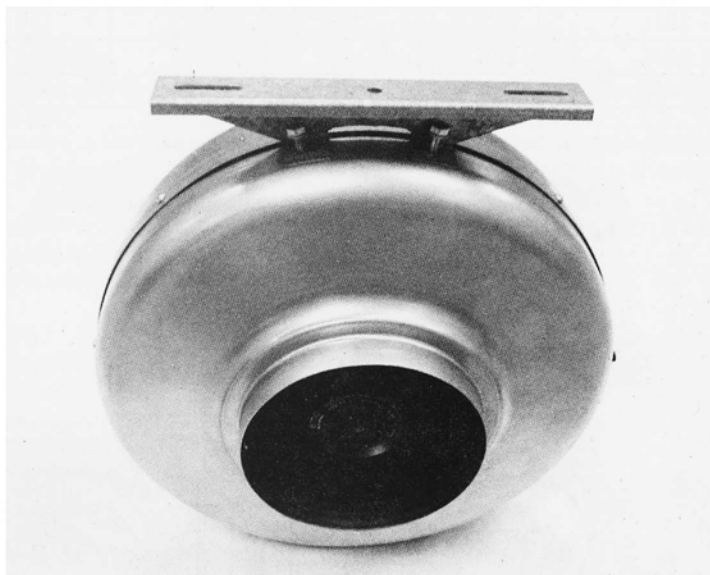
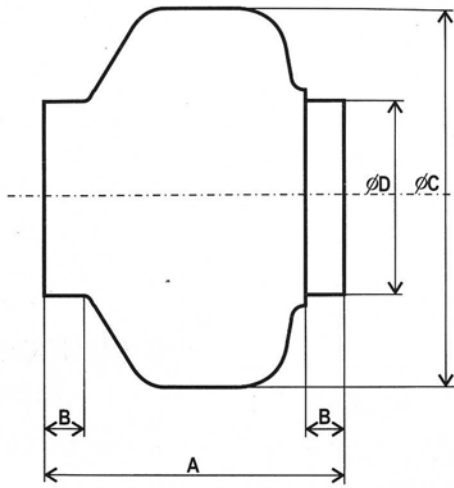


Instrucciones de uso
Operating instructions
Notice d'emploi
Bedienungsanleitung
Bedieningsinstructies

Instruções de utilização
Istruzioni per l'uso
Betjeningsvejledning
Driftsanvisning
Instrukcja obsługi





Type	A	B	C	D
VENT 100L	194	23	243	98
VENT 125L	195	27	243	123
VENT 150L	214	24	333	147
VENT 160L	222	28	333	157
VENT 200L	223	25	333	198
VENT 250L	206	27	333	248
VENT 315L	230	25	401	312

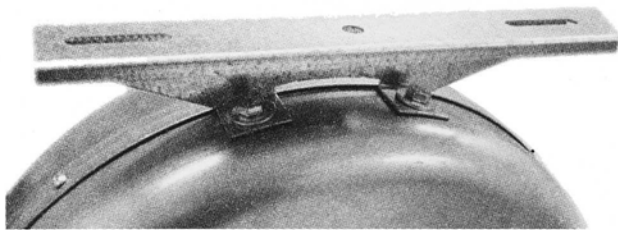


fig. 1

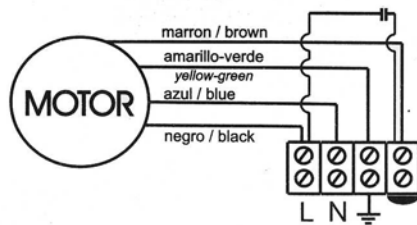


fig. 2

ENGLISH

Installation and wiring instructions for VENT in-line duct fans.

The VENT range of in-line duct extractor fans has been manufactured to rigorous standards of production laid down by the International Quality Standards ISO 9001. All the components have been checked and tested at the end of the manufacturing process.

We recommend that you check the following when receiving this product:

- That is the correct size and model.
- That the details on the rating label are those you require; voltage, frequency, performance...

IMPORTANT SAFETY INFORMATION

- The installation should always be carried out in accordance with all current applicable Standards to the country in which it is installed.
- The installation should always be carried out by a suitably qualified and competent person(s).
- These fans are not for stand-alone use. They are designed to be incorporated into ducted systems, machines or where safe operation has been ensured by providing applicable protection to moving parts.
- Do not use this product in, or to extract from, potentially hazardous or explosive atmospheres.

INSTALLATION

- This unit must not be installed outside, unless covered by a suitable weatherproof enclosure.
- Before installing the unit ensure the impeller is running freely and there are no obstructions to the airflow.
- For installation, a robust mounting foot is available as an accessory. Please contact your local Distributor.
- The fan should be installed to ensure minimum vibration and noise transmission to surrounding ductwork and building frames. Antivibration mountings and sound attenuating accessories are available. Please contact your local distributor.
- The fan should always be installed so that safe operation and maintenance can be ensured.

ELECTRICAL CONNECTION.

- Before Installation and Wiring ENSURE THE MAINS ELECTRICAL SUPPLY IS DISCONNECTED!!
- Ensure that the voltage and frequency of the electrical supply match the information stated on the Data Plate of the unit (maximum recommended tolerance of Voltage (V) and Frequency (Hz) $\pm 5\%$).
- Connect the electrical supply in accordance with the electrical wiring diagrams included within this booklet.
- Before operation, check all connections are correct and there are no obstructions to the airflow.
- On connecting the electrical supply ensure the direction of rotation and airflow correspond with the direction of airflow / rotation arrows (sited on unit).

MAINTENANCE.

- Before inspection or repair, ensure that the unit is disconnected from the mains electrical supply.
- Avoid excessive accumulation of dust and dirt on the motor. The fan impeller should be cleaned at least once (1) a year to ensure trouble free operation.
- Do not clean the unit with strong detergents or cleaning fluids. Use a damp (not wet) cloth only for cleaning.

(S&P reserve the right to alter specifications without prior notice)